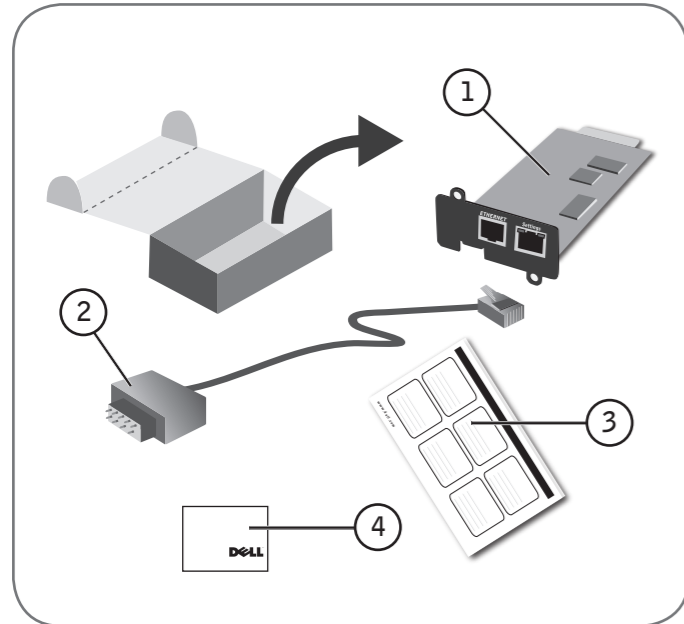
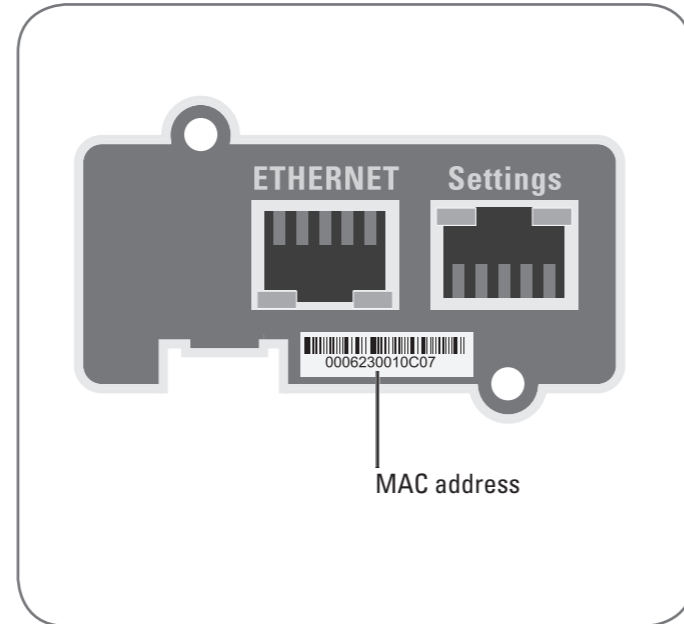




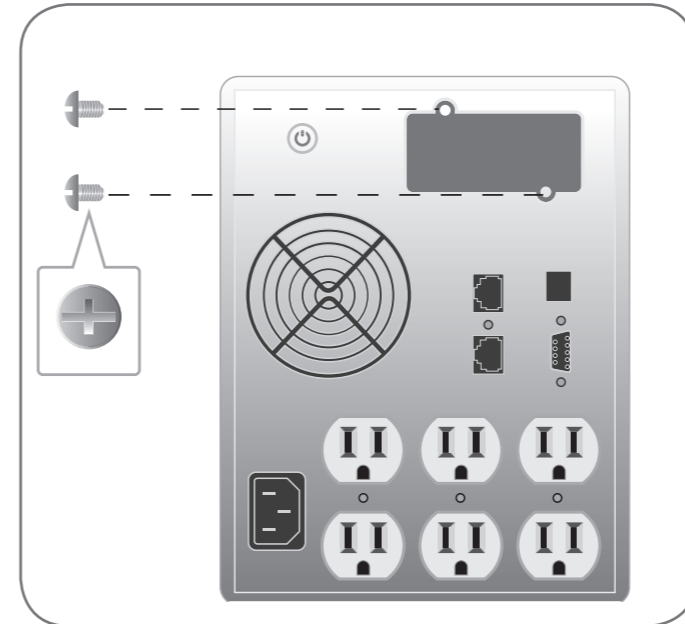
Setting Up Your Network Management Card



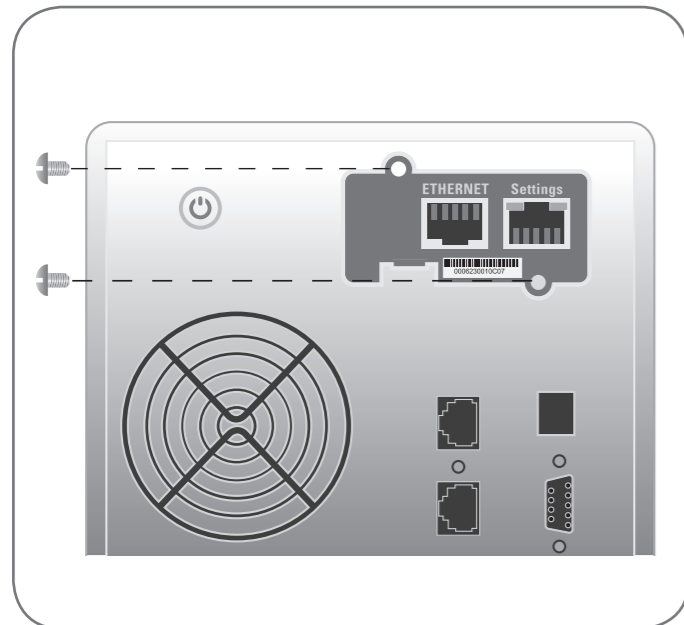
- 1** **Verify the package contents**
1. Network Management Card
 2. Serial cable
 3. Setup instructions
 4. Safety, Environmental, and Regulatory Information



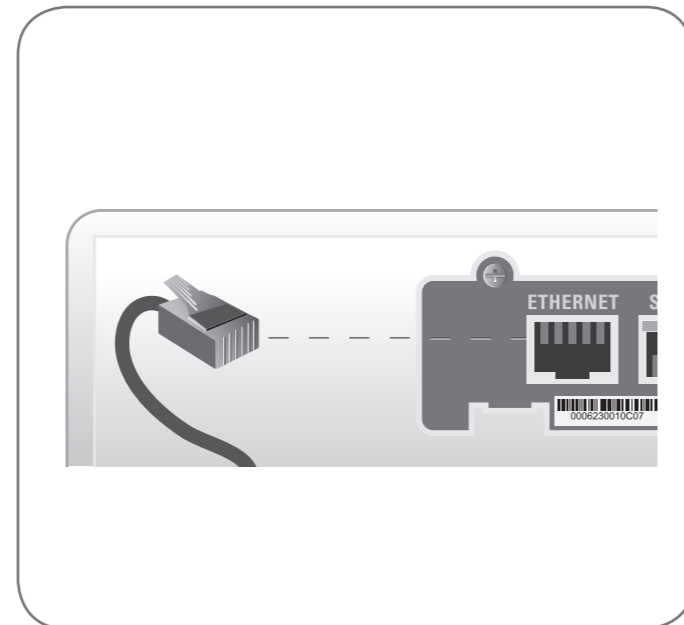
- 2** **Note the MAC address on the card**



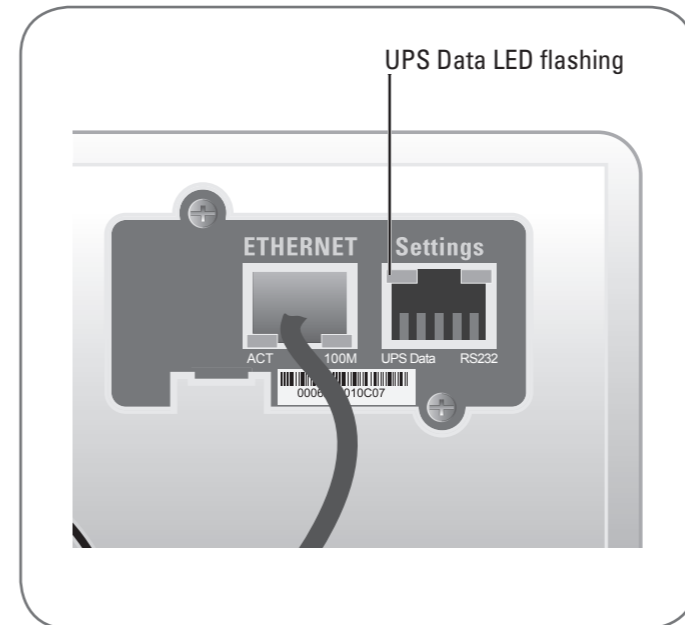
- 3** **Remove the cover from the UPS communication bay**



- 4** **Insert and secure the card with the retaining screws**

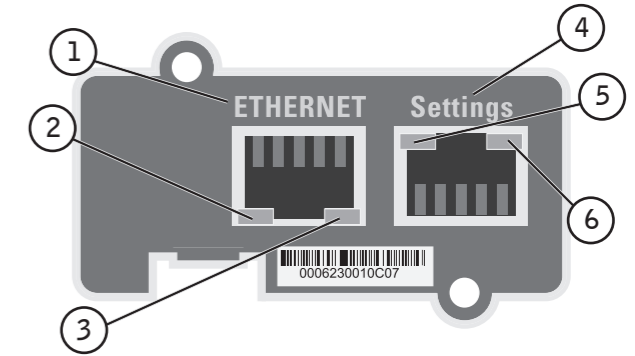


- 5** **Connect an Ethernet cable to the card and to the network (not supplied)**
- NOTE: You can set the card parameters via the Settings Port even if the network is not connected



- 6** **Wait approximately two minutes until the UPS Data LED flashes regularly, indicating normal operation**

About Your Network Management Card



1. Ethernet port (10/100BaseT)
2. ACT LED (green)
3. 100M LED (orange)
4. Settings port
5. UPS Data LED (green)
6. RS232 LED (orange)

Ethernet Port (10/100BaseT)

| | | |
|-------------------|----------|---|
| ACT LED (green) | Off | Card is not connected to the network |
| | On | Card is connected to the network, but no activity |
| | Flashing | Port is sending/receiving |
| 100M LED (orange) | Off | Port is operating at 10 Mbits/s |
| | On | Port is operating at 100 Mbits/s |

Settings Port

| | | |
|----------------------|----------|---|
| UPS Data LED (green) | Off | Card is starting |
| | On | Card is communicating with the UPS |
| | Flashing | Normal operation; communication with the UPS is operational |
| RS232 LED (orange) | On | Configuration menu is activated |
| | Off | Normal operation; Configuration menu is not activated |

Configuring the Card

| IP Default Settings: | |
|------------------------------|--------------------------------------|
| IP Network | BOOTP/DHCP enabled |
| | IP address: 192.168.1.2 |
| | Subnet mask: 255.255.0.0 |
| | Gateway: 0.0.0.0 |
| | NTP server: pool.ntp.org |
| Web page access control | User name: admin Password: admin |
| Settings port access control | Password: admin (not modifiable) |
| Date and time | Synchronize with an NTP server (GMT) |

1. Connect the serial cable to the card's Settings port and the computer's COM port.
2. Start a terminal emulator, such as HyperTerminal®, with these settings:

| Bits per second | Data bits | Stop bits | Parity | Flow control |
|-----------------|-----------|-----------|--------|--------------|
| 9600 | 8 | 1 | none | none |

“Echo typed characters locally” option: disabled.

3. Type **admin**.

| NETWORK MANAGEMENT CARD : | |
|---------------------------|-----------------------------------|
| 1 | : Reset |
| 2 | : Network configuration |
| 3 | : Set Login Password to Default |
| 4 | : Return to Default Configuration |
| 0 | : Exit |

If your network is equipped with a BOOTP/DHCP server (default)

The card automatically collects the IP parameters from the server.

To view the parameters:

1. Press the **2** key for Network configuration.
2. Press the **1** key for Read Network settings.

The card displays the settings supplied by the server.

| NETWORK CONFIGURATION : | |
|-------------------------|---------------------|
| MAC address | : 00:20:85:FD:1C:07 |
| Mode | : DHCP |
| IP address | : 192.168.1.2 |
| Subnet mask | : 255.255.248.0 |
| Gateway | : 166.99.17.1 |

3. To exit, press the **0** key twice.

If your network is not equipped with a BOOTP/DHCP server

Configure the card manually. To set the network configuration:

1. Press the **2** key for Network configuration.
2. Press the **2** key for Modify Network settings.

Follow the instructions and enter the IP parameters:

| NETWORK SETTINGS : | |
|--------------------|---------------------------|
| 1 | : Read Network settings |
| 2 | : Modify Network settings |
| 3 | : Set Ethernet speed |
| 0 | : Exit |

For each of the following questions, you can press <Return> to select the value shown in braces, or you can enter a new value.
Should this target obtain IP settings from the network?
[N] N
Static IP address [172.17.21.94]? 172.17.21.21
Subnet Mask IP address [255.255.248.0]? 255.255.255.0
Gateway address IP address [172.17.17.1]? 172.17.17.1
Done

Wait until Done displays, indicating that the IP parameters have been saved.

3. Press the **0** key to exit.
4. Press the **1** key to reset.
5. Press the **2** key to restart.

The card restarts with the new IP settings in approximately one minute.

Accessing the Card

1. Run a Web browser.
2. Enter the card's IP address in the address bar:
<https://xxx.xxx.xxx.xxx/> (for example, <https://166.99.1.82/>)
3. The home page displays:

4. Set the time by clicking the **Time** command.
5. Continue configuration via the sections in the **Settings** menu.

Information in this document is subject to change without notice.
© 2009 Dell Inc. All rights reserved.

Reproduction of these materials in any manner whatsoever without the written permission of Dell Inc. is strictly forbidden.

Dell and the DELL logo are trademarks of Dell Inc. Dell disclaims proprietary interest in the marks and names of others.

May 2009

This setup document and the *Dell Network Management Card User's Guide* are available in other languages at: support.dell.com

Français
Ce document de configuration et le Guide d'Utilisation de la Carte de Gestion de Réseau Dell sont disponibles dans d'autres langues sur : support.dell.com

Deutsch
Das vorliegende Dokument zur Konfiguration sowie die Bedienungsanleitung für die Dell Network Management Karte sind in weiteren Sprachen unter der folgenden Adresse erhältlich: support.dell.com

日本語
このセットアップ用説明書および Dell Network Management Card ユーザーガイドはこちらのリンクにて他の言語でもご覧いただけます: support.dell.com

한국어
이 설치 문서와 Dell 네트워크 관리 카드 사용자 가이드는 아래의 사이트에서 다른 언어로도 입수할 수 있습니다: support.dell.com

Русский язык
Данная инструкция по настройке, а также Руководство пользователя платой сетевого администрирования Dell доступны на других языках по адресу: support.dell.com

简体中文
本安装手册和戴尔网络管理卡用户指南在网站上提供下列语言版本: support.dell.com

Español
Este documento de instalación y la Guía del Usuario de la Tarjeta de Manejo de Redes de Dell se encuentran disponibles en otros idiomas tales como: support.dell.com

繁體中文
此安裝文件和戴爾網路管理卡使用者指南的下列語言版本, 可在網站上取得: support.dell.com